

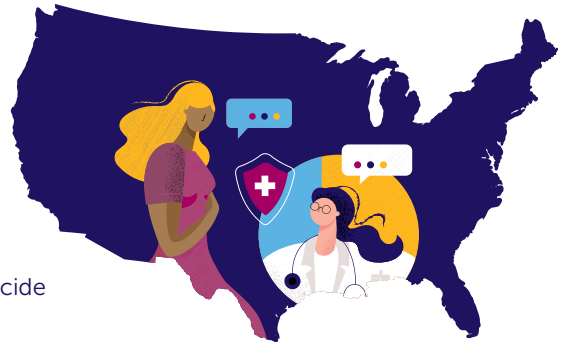
SURVEY SAYS

POWER TO DECIDE, THE CAMPAIGN TO PREVENT UNPLANNED PREGNANCY

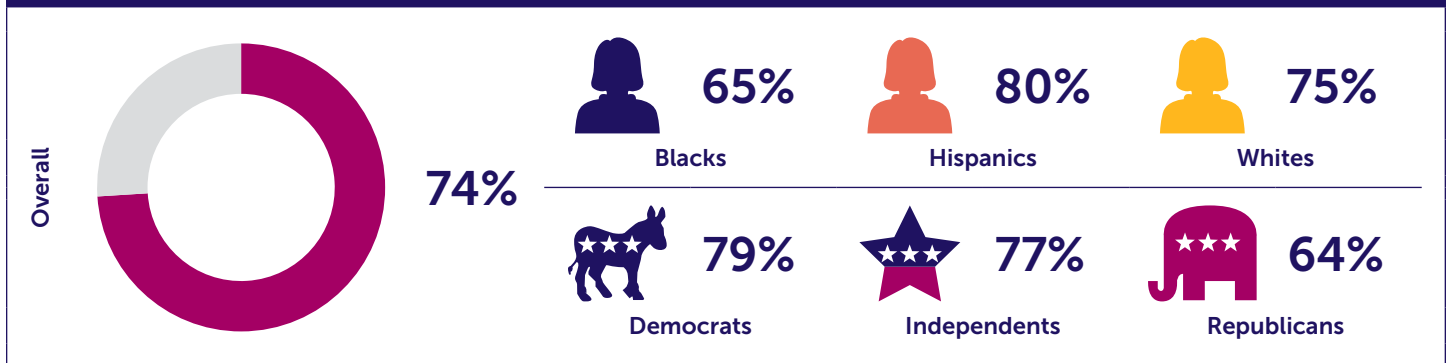
New Polling from Power to Decide Shows Support for Abortion Care is Widespread

Abortion care is an essential part of reproductive health services people need to stay healthy and live life on their own terms. Research shows that abortion care restrictions and bans impact people's financial status and emotional health. Per the data, women denied abortion care are **four times as likely** to live below the federal poverty line compared to women who were able to access abortion care when needed.

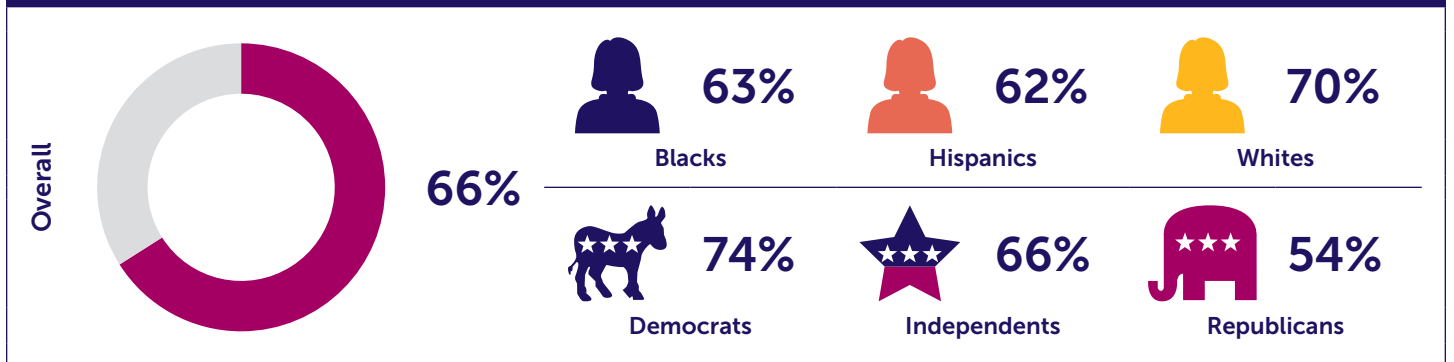
People's ability to manage their reproductive health is tantamount to ensuring their physical and emotional well-being. In addition, **the ability to access the full spectrum of reproductive health services** provides people the opportunity to decide if, when and under what circumstances to get pregnant and have a child.



Most believe abortion care should remain legal, regardless of political affiliation or race/ethnicity



Concern over future access to abortion care is significant and widespread



The study was conducted for Power to Decide via telephone by SSRS, an independent research company. Interviews were conducted between September 21, 2021 – October 7, 2021 among adults ages 18 to 45. A total of 1,005 interviews were conducted, with a margin of error for total respondents of +/-3.95% adjusted for design effect, at the 95% confidence level



PowerToDecide.org

Bedsider.org

info@powertodecide.org